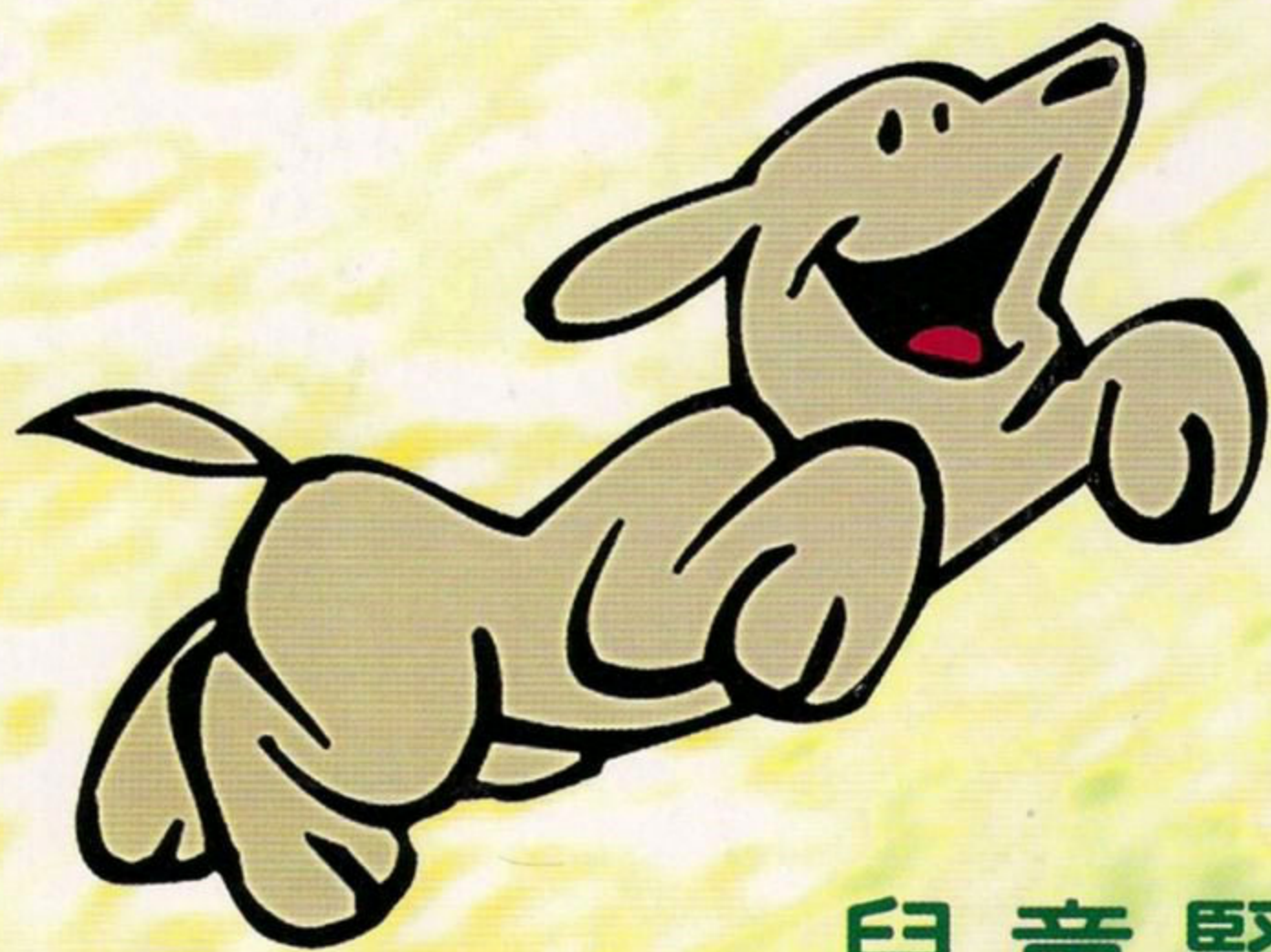


多謝
Thank You



兒童腎病基金
Children's Kidney Trust Fund

辦事處 Office
九龍彌敦道 136A 三樓
3/F, 136A Nathan Road, Kowloon.
電話 Tel: 23694928



兒童腎病基金 Children's Kidney Trust Fund



二零零一年年報
Annual Reports of 2001

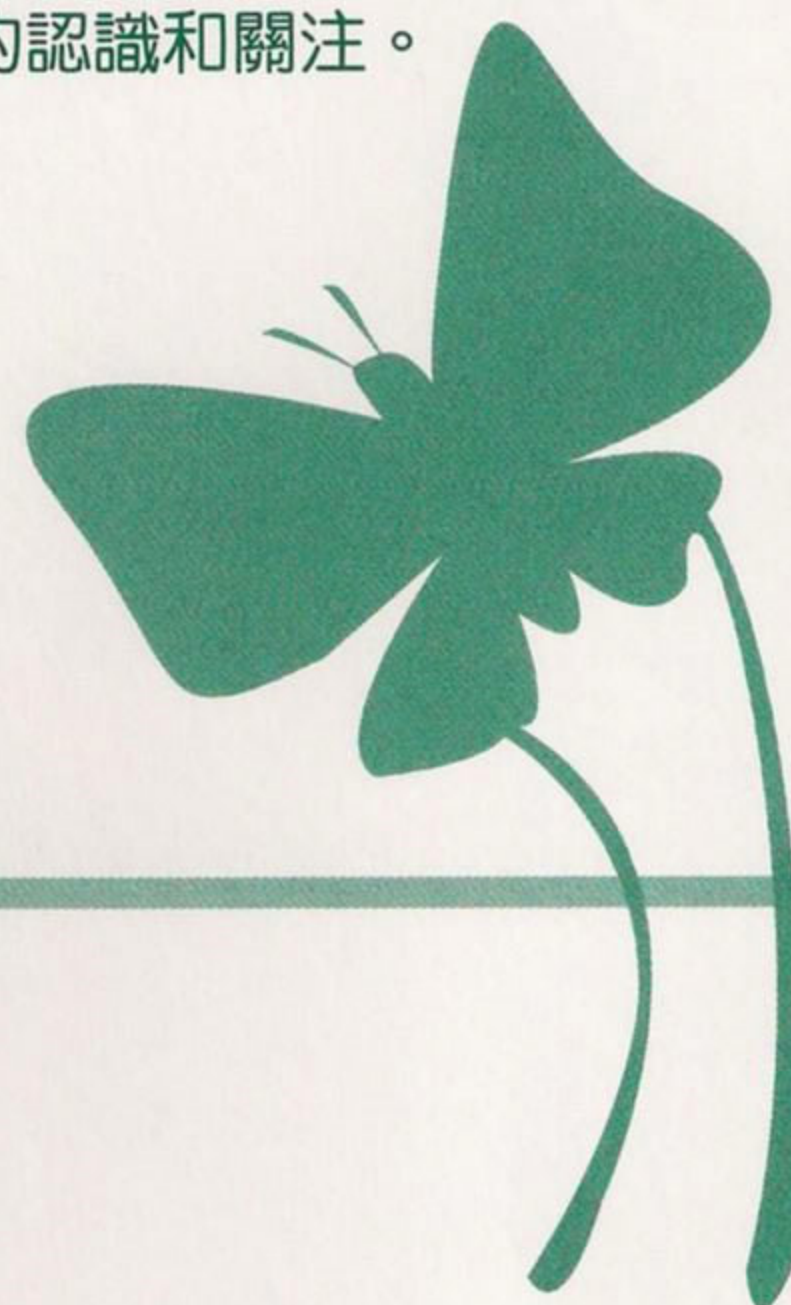


服務宣言



兒童腎病基金的宗旨為：

- * 關懷腎病兒童身心各方面的發展和需要，改善他們的生活質素，並為他們及其家庭提供心理輔導和醫療資訊。
- * 加強病童家庭間的聯繫，鼓勵他們互相扶持。
- * 致力改善腎病醫療服務，促進腎病研究及其醫療訓練。
- * 積極推廣腎病的健康教育，提高市民對兒童腎病的認識和關注。



Mission Statement

The missions of Children's Kidney Trust Fund are :

- * Take care of the physical and psychological development of children with kidney diseases; strive to improve the quality of living of these children; provide psychological counselling and medical information of these children and their families.
- * Strengthen the communication of families of these children by encouraging them to support each other.
- * Endeavor to improve medical services of kidney diseases and facilitate research and medical training of kidney diseases.
- * Enhance public understanding and concern of children's kidney diseases through active promotion and education.

2001年主席報告

香港受到去年 911 事件影響，經濟市道依然疲弱。然而，兒童腎病基金仍能藉著各式各樣的籌款活動籌得善款，使腎病兒童繼續受惠。

兒童腎病基金於年度內舉辦不同形式的籌款活動，獲得善心人熱心捐款，實有賴各界人士鼎力襄助。2001年1月，本基金有幸得到盈科保險集團有限公司支持舉辦電影慈善首影，及在奇華餅家大力捐贈下，同時舉行奇華禮餅慈善義賣；同年7月，得到有線電視娛樂台全力支持，肥媽 Maria Cordero 及眾主持在地鐵站舉行慈善券銷售活動。此外，基金在40多位義工協助下，連同肥媽 Maria Cordero 及有線電視娛樂台眾主持，包括毛舜筠、李麗蕊、施明、關寶慧、張學潤及林祖輝等於西九龍中心舉行產品義賣籌款活動。薛家燕、車婉婉、廖安麗、梁漢華議員及梁安琪議員亦撥冗蒞臨現場呼籲市民捐款。



於11月，東方魅力為基金舉行「名人慈善二手衫大特賣」；12月，瑪嘉烈醫院舉行「繽紛園遊會」及「關懷腎友慈善音樂會」，邀得李克勤、車淑梅、香港醫學會合唱團及管弦樂團和陳亦霄大提琴組為表演嘉賓，基金為活動受惠機構之一；12月中，香港冬季嘉年華為基金設置義賣攤位及許願井籌款；而美國運通銀行亦為基金舉辦員工籌募捐款，基金並於2002年1月為其員工舉行「保護腎臟健康講座」，反應熱烈。

我們藉此感謝在過去一年曾對本基金給予支持的機構。本人並對在各籌款活動中付出努力的基金委員，義工及病童家屬，表示由衷的感謝。我們來年將繼續舉辦多項不同形式的籌款活動，以繼續發掘更多籌募經費的機會。

基金信託人已經選出趙孟準醫生為來年新任主席，我們相信在他帶領下，我們定會繼續努力，共同為病童謀取福祉，為他們燃點生命新希望。

兒童腎病基金主席
邱徽道醫生

Chairman's Report 2001

Despite the difficult economic situation in Hong Kong after the September 11th incident, the Trust Fund has been fortunate to be able to raise a significant amount of money through various activities.

We have secured the support of many benevolent donors in our community. In January 2001, Pacific Century Insurance Co. Ltd. held a gala premiere for raising fund for us, and in the same occasion, Kee Wah Bakery held a charity cake sale for the Trust Fund too. In July, Cable TV has kindly allowed its famous artists, including Ms. Maria Cordero, to help out in our raffle ticket sale. A large scale charity sale was organized in the Dragon Centre with the help of over 40 volunteers. Again, Ms. Maria Cordero and many artists from Cable TV, including Ms. Teresa Mo, Ms. Sara Lee, Ms. Frances Fong, Ms. Emily Kwan, Mr. Nelson Cheung and Mr. Lam Cho Fai came and helped in the fund-raising. We are particularly grateful to Ms. Nancy Sit Ka Yin M.H, Ms. Stephanie Che, Ms. Annie Liu, Ms. Angel Leung (Member of Eastern District Council) and Mr. Leung Hon Wah (Member of Shamshupo District Council) who did come in person and appeal to the public for more donations.



In November, Star East Holdings Limited organised a "Celebrities' Clothes Sale" for us. In December, Princess Margaret Hospital organised a fun fair together with a charity concert in which our Trust Fund was named as one of the beneficiaries, Mr. Hacken Lee, Ms. Candy Chea, Hong Kong Medical Association Choir and Orchestra and Riccardo Chan's Cello Group were invited as the performing artists. In the same month, World Carnival Limited set up a "Wishing Well Campaign" and a charity sale stall which allowed us to raise money. The staff of American Express Int'l., Inc. have kindly made a donation to the Trust Fund and we have sent doctors to deliver a health seminar to them on "Kidney Health Care". The response from the audience was most encouraging.



We must pay tribute to these organizations which have been so kind in supporting our Trust Fund. I would like to sincerely thank all the committee members, volunteers and families who have contributed so much to these activities. However, because of the continuing needs of our patients, we still need to look for opportunities for fund-raising in the coming years.

We are glad that the Trustees have elected Dr. M.C. Chiu as the new Chairman. We are sure that, under his able leadership, we would continue to strive for the welfare of the children with kidney problems. Let us continue to add hopes to their valuable lives.



Dr. Yau Fai To
Chairman of Children Kidney Trust Fund

活動報告



兒童腎病基金於二零零一年度繼續舉辦了一連串不同活動，為基金籌募了不少經費，惠澤更多病童。

2001年1月12日

盈科保險集團有限公司為基金舉行電影「鍾無艷」慈善首映及奇華禮餅慈善義賣活動。

2001年7月14日、15日、21日及22日

分別在地鐵荃灣站、小西灣邨、地鐵旺角站及尖沙咀站舉行慈善券銷售活動。

2001年7月28日及29日

在西九龍中心舉行產品義賣籌款活動，更得歌星藝人表演助慶及支持，共襄善舉。

2001年11月2日、3日及4日

東方魅力為基金舉行「名人慈善二手衫大特賣」籌款活動。

2001年12月1日

在瑪嘉烈醫院舉行「繽紛園遊會」及「關懷腎友慈善音樂會」，本基金為受惠機構之一。

2001年12月13日至22日

香港冬季嘉年華為基金設置義賣攤位及許願井籌款。

2001年12月

美國運通國際股份有限公司為基金舉辦員工籌募捐款，而基金於2002年1月17日為其員工舉行「保護腎臟健康」講座。



Activities' Report



The Children's Kidney Trust Fund had successfully organised several activities in 2001. Through these events, we had raised funds for the benefits of those young kidney patients.

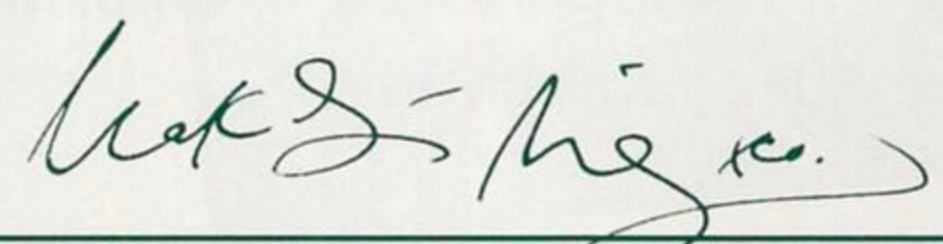
- * Pacific Century Insurance Holdings Ltd had organised a charity film premiere featuring "Wu Yen" on 12 January 01. Kee Wah Bakery was also one of the supporters for the charity sales in the event.
- * Charity raffles tickets were sold at Tsuen Wan MTR Station, Siu Sai Wan Estate, Mongkok and Tsim Sha Tsui MTR Stations on 14, 15, 21, 22 July 02 respectively.
- * A charity bazaar was held at the Dragon Centre on 28 and 29 July 01. Pop singers and artists had participated in this fun fair and had encouraged the public to make generous donation.
- * Star East Holdings Ltd had executed a fund raising campaign for the Trust via charity sales on second-handed clothing from celebrities on 2, 3 and 4 November 01.
- * Princess Margaret Hospital orchestrated a charity concert on 1 December 2001. Children's Kidney Trust Fund was one of the beneficiaries for the donation.
- * Charity sales booths and wishing wells were located at the Winter Carnival for fund raising on 13 - 22 December 01.
- * American Express received donations for the Trust from their employees in December 2001. The Trust therefore facilitated a staff seminar on "Kidney Health Care" on 17 January 2002.



核數師報告

本核數師已根據核數準則，審核刊於第7頁的帳項。

依照本核數師意見，根據所有我們獲得的資料和解釋，以及兒童腎病基金帳目上所載，該帳項及其附註足以顯示兒童腎病基金在二零零一年十二月三十一日結算時之真實而公正的財政狀況。

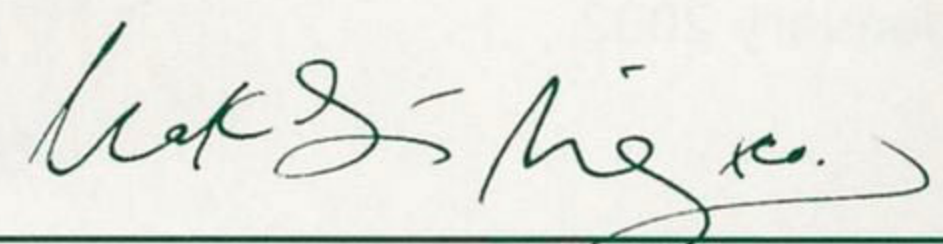


麥兆明會計師事務所
香港執業會計師

Auditors' Report Children's Kidney Trust Fund

We have audited the financial statements of Children's Kidney Trust Fund set out on page 7 in accordance with Auditing Standards.

In our opinion, the statements give a true and correct view of the trust fund's affairs at 31 December, 2001 according to the best of our information and explanations given to us, and as shown by the books of the Trust Fund.



Mak Siu Ming & Co.
Certified Public Accountants Hong Kong

資產負債表

BALANCE SHEET

截至二零零一年十二月三十一日止

AS AT 31 DECEMBER, 2001

	Note	2001 HK\$	2000 HK\$
固定資產			
FIXED ASSETS	4	1	580
流動資產			
CURRENT ASSETS			
現金及存款結餘			
Cash and bank balances		2,186,515	1,698,847
		<u>2,186,516</u>	<u>1,699,427</u>
資金來源			
Financed by :-			
基金			
TRUST FUND		<u>2,186,516</u>	<u>1,699,427</u>

委員會

贊助人 : 王葛鳴議員
 主席兼信託人 : 邱徽道
 信託人 : 趙孟準
 黃錫年
 何慧雯
 義務法律顧問 : 劉令施
 義務核數師 : 麥兆明
 義務行政主任 : 林泓昕
 義務行政助理 : 馮笑珍
 委員 : 陳群英
 陳文仙
 陳思凌
 黎錦新
 黃詠恩

Committee

Patron : Dr. The Honourable
 Rosanna Wong Yick Ming JP.
 Chairman and Trustee : Yau Fai To
 Trustee : Chiu Man Chun
 Wong Sik Nin
 Ho Wai Man, Tabitha
 Hon. Legal Advisor : Lau Ling Sze, Nancy
 Hon. Auditor : Mak Siu Ming, Samuel
 Hon. Executive Officer : Lam Royan
 Hon. Administrative Assistant : Fung Siu Chun, Maggie
 Committee Member : Chan Kwan Ying, Winnie
 Chan Man Sin, Randa
 Chan See Ling, Angela
 Lai Kam Sun
 Wong Wing Yun, Alma



鳴謝 Acknowledgements

兒童腎病基金衷心感謝各善長仁翁，特別是以下各機構及個別人仕：

Our heartfelt thanks to all parties for their generous contributions to Children's Kidney Trust Fund, particularly the following organisations & individuals:

- | | |
|-------------------|--------------------------------------------------|
| 美國雅培製藥有限公司 | Abbott Laboratories Limited |
| 美國運通國際股份有限公司 | American Express International, Inc. |
| 加拿大帝國商業銀行及加拿大怡東集團 | Canadian Imperial Bank of Commerce (CIBC CEF) |
| 潤迅通信(香港)有限公司 | China Motion Telecom (Hong Kong) Limited |
| 中醫臨床研究會診中心 | Clinical Research Centre on Chinese Medicine |
| | Cosmopolitan |
| | Deli Communications |
| 美味傳訊 | Dragon Centre Management Limited |
| 西九龍中心 | Egmont Hong Kong Limited |
| | Elite Marketing & Production |
| 懿東製作 | Furama Hotel Hong Kong |
| 富麗華酒店 | Grateful 18 Islands Golf Society |
| 加飛18島高爾夫球會 | Harbour Plaza Hong Kong |
| 海逸酒店 | Haywood International Financial Planning Limited |
| 希活國際財經策劃有限公司 | Hong Kong Cable TV |
| 有線電視娛樂台 | |

- | | |
|---------------|-------|
| Maria Cordero | 薛家燕 |
| 毛舜筠 | 車婉婉 |
| 施明 | 廖安麗 |
| 李麗蕊 | 梁安琪議員 |
| 關寶慧 | 梁漢華議員 |
| 張學潤 | 鄭偉明 |
| 林祖輝 | 黃素璧 |
| 衛志豪 | 白原穎 |
| 路芙 | 陸浩明 |



香港家庭福利會
 香港房屋委員會小西灣邨辦事處
 港島香格里拉大酒店
 香港萬豪酒店
 奇華餅家
 李敬強先生
 星座小皇子

綠楊坊
 美極
 麥兆明會計師事務所
 民生國際有限公司- 鄭松興先生
 文華東方酒店
 萬利寶(香港)有限公司
 地鐵公司
 雀巢香港有限公司
 友營堂

盈科保險集團有限公司

培生教育出版北亞洲有限公司
 繽紛荷里活
 瑪嘉烈醫院兒科部腎病中心

富豪機場酒店
 萊斯基亞
 莎蓮娜食品有限公司
 信興JVC有限公司
 慎昌有限公司
 東方魅力

君怡酒店
 半島酒店

威確顧問有限公司
 沃爾福特
 香港冬季嘉年華
 智進保健國際有限公司
 伍威權先生
 勇展寶石首飾製造廠
 快樂使者義工團
 味鮮食品有限公司

Hong Kong Family Welfare Association
 Hong Kong Housing Authority Siu Sai Wan Estate Office
 Island Shangri-La, Hong Kong
 JW Marriott Hotel Hong Kong
 Kee Wah Bakery
 Mr. Lee, Patrick
 Little Horoscope Prince Co.
 Lucky Plastic Factory Limited
 Luk Yeung Galleria
 Maggi
 Mak Siu Ming & Co. Certified Public Accountants
 Man Sang International Limited - Mr. Ricky Cheng
 Mandarin Oriental, Hong Kong
 Maxbo (H.K.) Limited
 MTR Corporation
 Nestle Hong Kong Limited
 Nutrition Tat Works Limited
 Oficina Limited
 Pacific Century Insurance Holdings Limited
 Pacific Classic Limited
 Pearson Education North Asia Limited
 Planet Hollywood
 Renal Centre, Department of Paediatrics, Princess Margaret Hospital
 Regal Airport Hotel
 Royal Skandia
 Sarinah Foods Company Limited
 Shun Hing JVC Limited
 Sim Trading Company Limited
 Star East Holdings Limited
 Tai Cheung Toys Exports Limited
 The Kimberley Hotel
 The Peninsula Hong Kong
 Trinity Print & Pack Limited
 Win Concept Consulting Company Limited
 Wolford
 World Carnival Limited
 World Expert International Limited
 Mr. Wu, Albert
 Yung Chin Gem & Jewellery Factory

收支帳 截至二零零一年十二月三十一日止
DETAILED STATEMENT OF INCOME AND
EXPENDITURE
YEAR ENDED 31 DECEMBER, 2001

	2001 HK\$	2000 HK\$
捐款收入 DONATION INCOME	964,291	406,281
其他收入 OTHER REVENUE		
銀行利息 Bank interest	56,201	93,067
雜項收入 Sundry income	-	500
	<u>1,020,492</u>	<u>499,848</u>
開支 EXPENDITURE		
廣告及推廣 Advertising and promotion	12,479	32,620
銀行費用 Bank charges	240	-
折舊 Depreciation	579	580
籌款活動 Fund raising activities	225,407	110,649
印刷及文具 Printing and stationery	6,226	15,446
郵費 Postage	1,333	1,598
禮品 Gift	6,500	4,500
資助 Subsidy	275,321	270,117
雜費支出 Sundry expenses	3,019	1,001
電話費 Telephone	1,575	1,632
交通費 Travelling	-	155
探訪 Visitation	724	6,500
	<u>533,403</u>	<u>444,798</u>
運作盈餘 OPERATING SURPLUS	487,089	55,050
基金餘額承前 TRUST FUND BROUGHT FORWARD	<u>1,699,427</u>	<u>1,644,377</u>
基金餘額移後 TRUST FUND CARRIED FORWARD	<u>2,186,516</u>	<u>1,699,427</u>

Your Care Light Up My Future
我們的希望在您手

To : Children's Kidney Trust Fund
3/F, 136A Nathan Road,
Kowloon.
Tel: 2369 4928

致：兒童腎病基金
九龍彌敦道 136A 三樓
電話：2369 4928

Date 日期：_____

I would like to support the meaningful work of Children's Kidney Trust Fund.
本人希望支持兒童腎病基金有意義之工作。

Methods of Donation 捐款方法

Please put a tick in the box for the method of donation chosen.
請在方格內✓出你選擇的捐款方法。

- Donation by cheque 支票捐款
I hereby enclose a cheque amounting to HK\$_____ as a donation.
茲隨函附上支票，金額_____元作為捐款。
- Donation into Hong Kong Bank Account No. 511-586810-001
存款進匯豐銀行之戶口：511-586810-001
I have deposited an amount of HK\$_____ as a donation.
茲隨函附上存入兒童腎病基金之匯豐銀行戶口，金額_____元的單據。

Please send me an official receipt at your convenience.
請發還收據。

Yes 需要 No 不需要

* Please mark your name and address overleaf for delivery of official receipt.
請在背頁寫上姓名、地址，以便郵寄收據。

名譽贊助人：王葛鳴議員
Patron : Dr. the Honourable
Rosanna Wong Yick Ming JP.


兒童腎病基金
Children's Kidney Trust Fund